

## 5000 Double Sliding System with thermal break

A thermally broken double window sliding system and shutter guide inserted between the external and internal sashes.



## 5000 Double Sliding System with thermal break

### Transmittance

Uw 1,4 (W/m²K)

Please consult typology, dimensions and glass

### Acoustic insulation

Maximum glazing: 0.71"

Maximum acoustic insulation  $Rw > 40$  dBA

### Finishes

Colour powder coating (RAL, mottled and rough)

Wood effect powder coating

Anti-bacterial powder coating

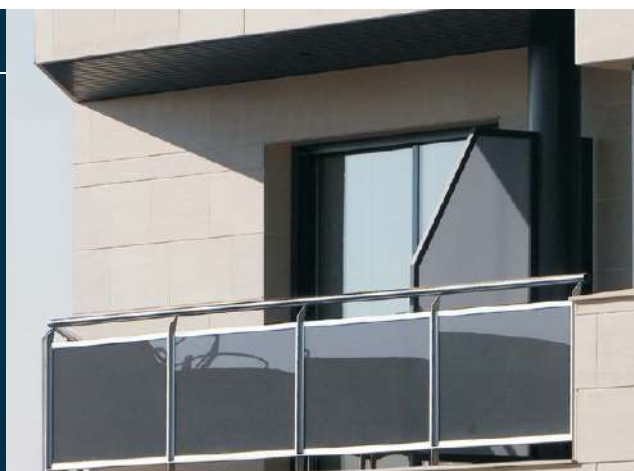
Anodized

### Categories achieved at test centre

Air permeability  
(EN 12207:2000): Class 3

Water tightness  
(EN 12208:2000): Class 8A

Wind resistance  
(EN 12210:2000): Class C4  
Reference test: 49.21" x 59.06" - 2 sashes



### Sections

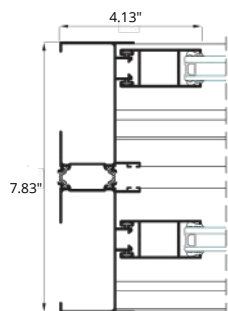
Frame 7.83"

Sash 1.10"

Polyamide strip length 0.63" 0.79"

### Profile thickness

Window 0.059"



### Opening possibilities



Slider of 2, 3 & 4 sashes.

### Maximum dimensions

Width (L) = 125.98"  
Height (H) = 102.36"

2 sashes window

Please consult regarding maximum weight and dimensions for other opening types

### Maximum weight/sash

80 Kg