

# CATALOGUE **X5**

SLIDING DOORS CREATING SPACE[S]



UNIVERSAL SYSTEMS FOR **FRAMELESS DOORS**





Wall build up	P08
Sliding door types	P10
Finish	P14
Door types	P17
Wall finish	P18
Special solutions	P22
Stock	P24
Accessories	P26



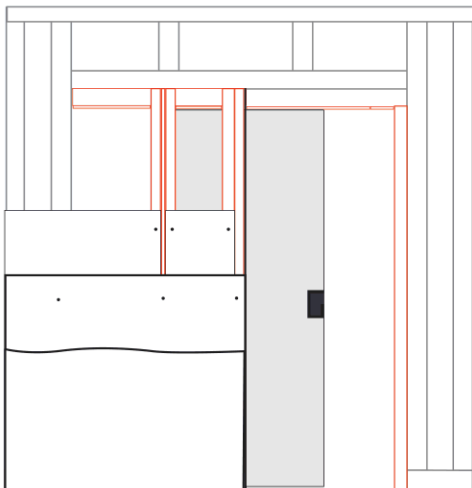




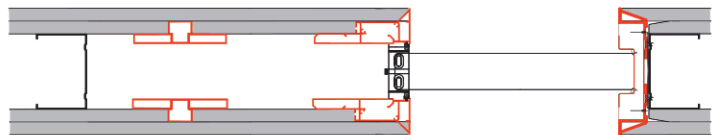


# WALL BUILD UP

## POCKET

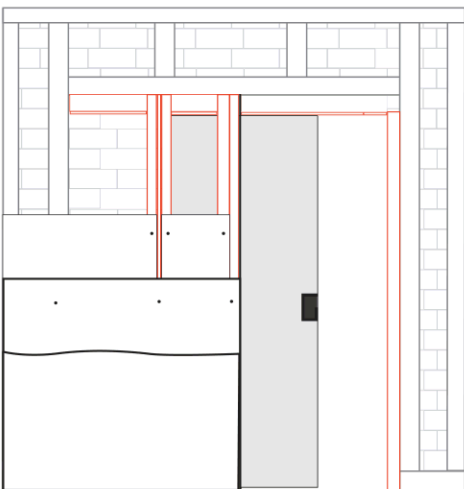


The X5 pocket system allows you to separate two spaces with a pocket sliding door that disappears seamlessly in the wall.

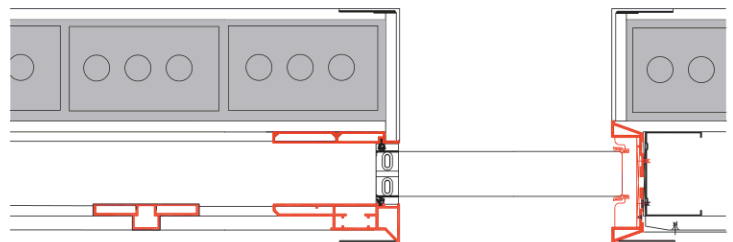


# WALL BUILD UP

## WALL

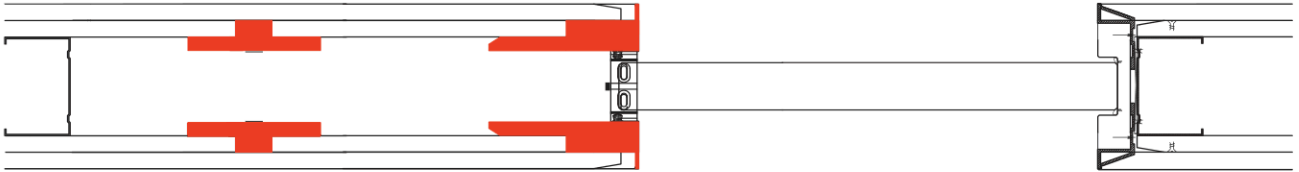


In a renovation where there is already a wall built, our X5 Wall system allows you to make a pocket in which the sliding door disappears.



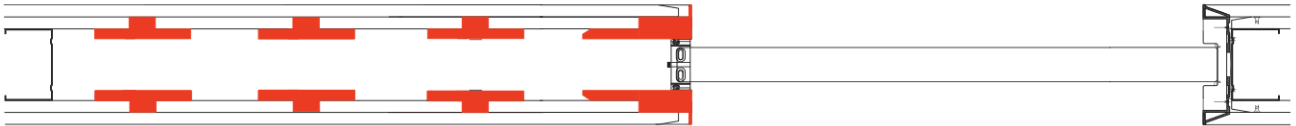
# SLIDING DOOR TYPES

## X5



Our sliding door disappears in a standard wall thickness so both sides of the wall can be used optimally. With our standard items you can create a desired height (up to 3515 mm, 11'5) and width (1230 mm 4').

## X5 XXL



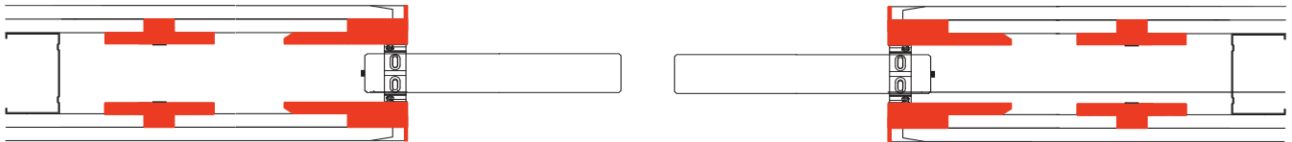
The build up of our X5 XXL consists of the same elements as the standard X5. By using extra sets of uprights a pocket sliding door width of up to 3030 mm, 10' can be realised.

## X5 DOUBLE



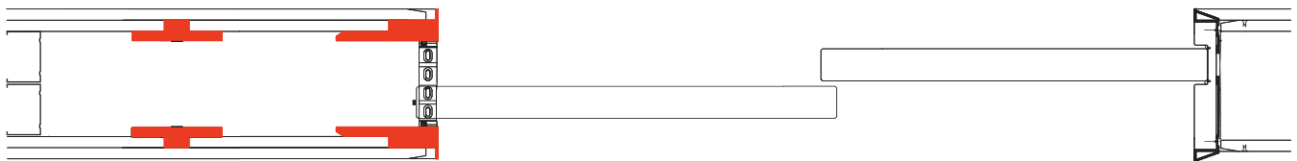
Double doors follow the same build up as a single door. Both panels move independently.

## X5 SYMMETRY



The X5 symmetry allows double doors to slide in a symmetric fashion.

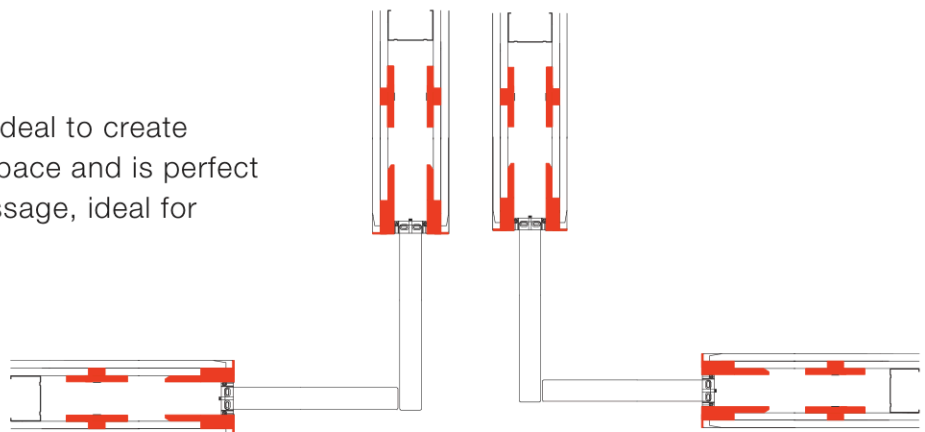
## X5 TELESCOPIC



When the telescopic system is used, both door panels disappear in the same wall. A bigger passage can be created.

## X5 ANGLE

This double door setup is ideal to create some privacy in an open space and is perfect to maintain a spacious passage, ideal for wheelchair access.



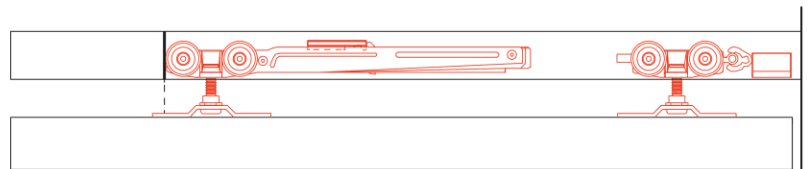
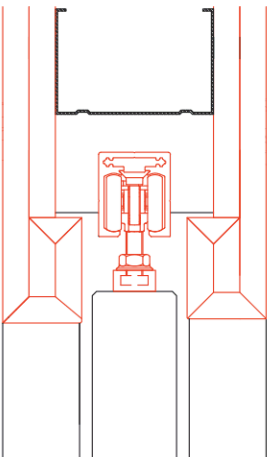
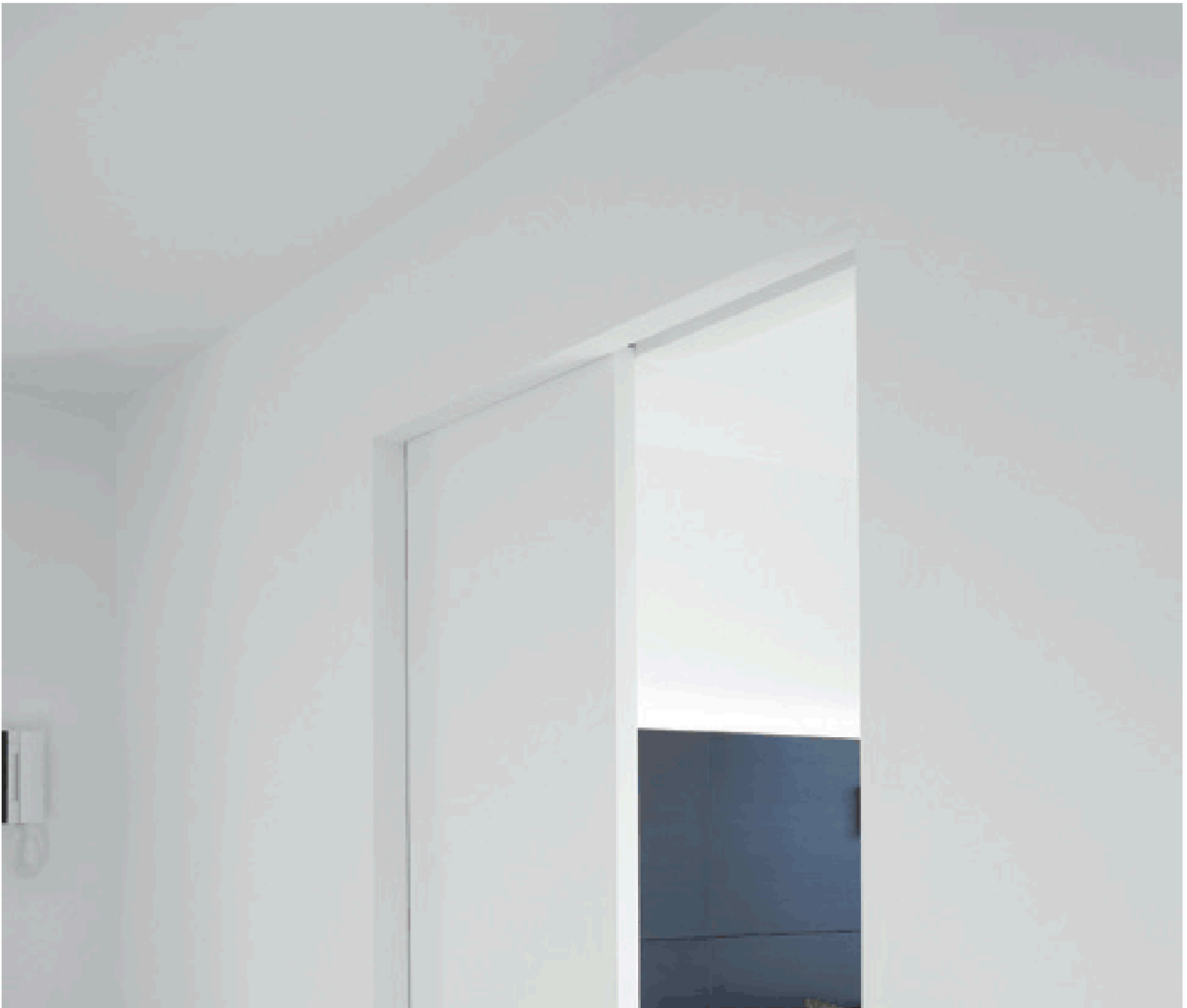




# FINISH

---

## BAUALU

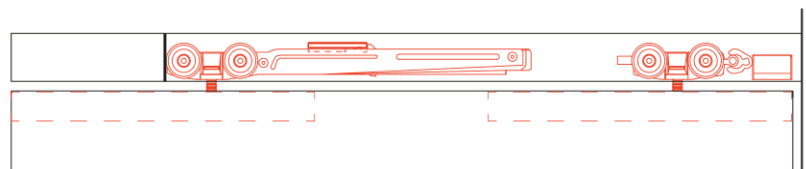
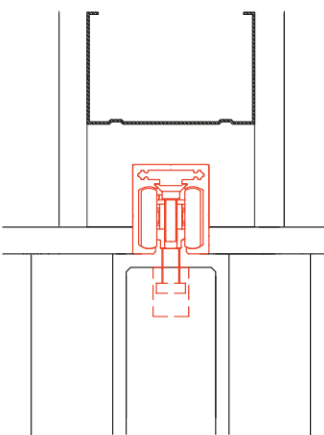


Our range has two finishing types. The 'BAUALU' finish covers up the rail and suspension with the finishing profiles.

# FINISH

---

## PURE

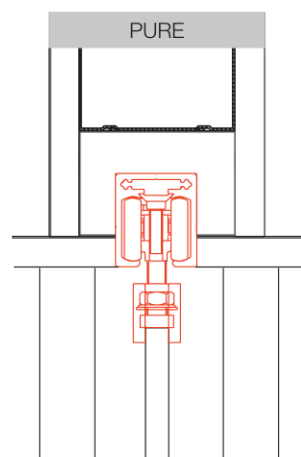
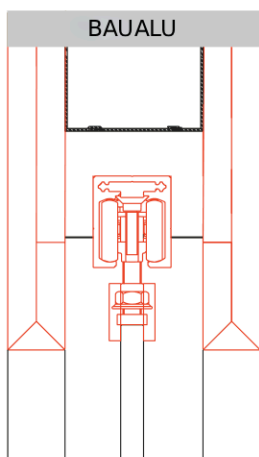
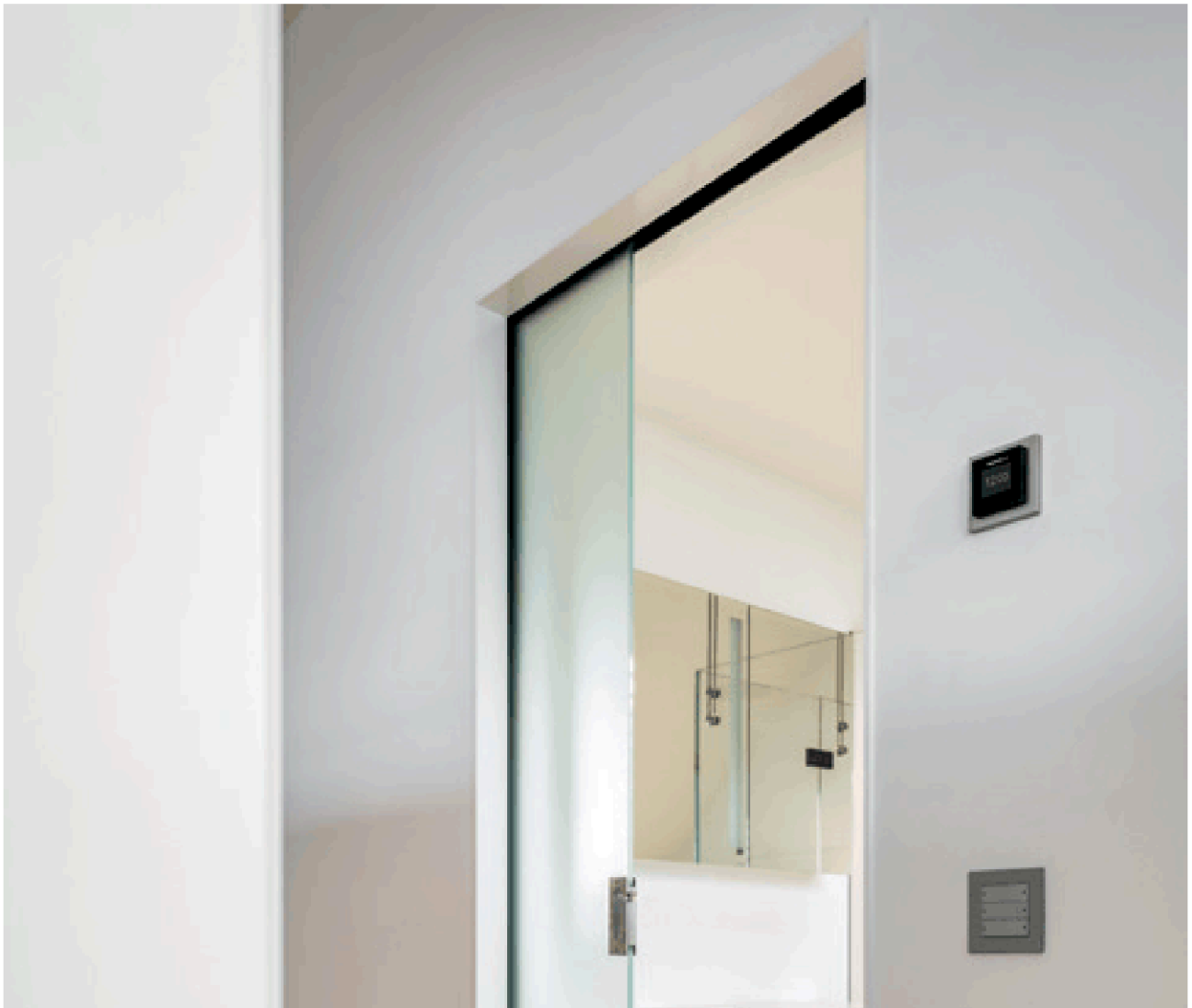


The 'Pure' finish has the suspension integrated in the door leaf. This finish is mainly used in ceiling high solutions where the rail is integrated in the ceiling.

# FINISH

---

## GLASS

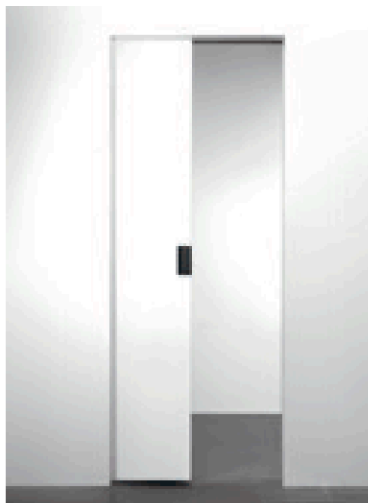


Our glass clamps disappear completely out of sight when using our **BAUALU**-finishing set. When using our **Pure** finish, the grey clamps are minimally visible.

# DOOR TYPES

## DOOR THICKNESS

### WOODEN DOOR



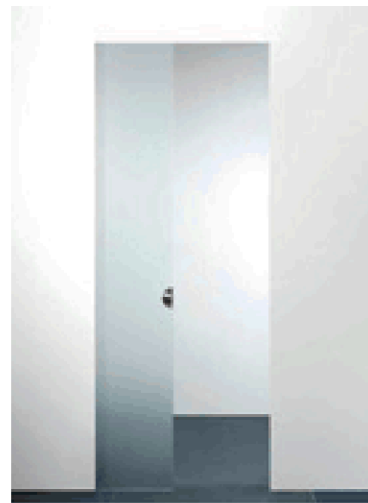
25-40 mm

Metalstud  
75\*

40-60 mm

Metalstud  
100\*

### GLASS DOOR



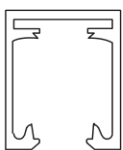
8-12 mm

Metalstud  
50\*\*/75\*

\*width profile wall construction

## DOOR WEIGHT

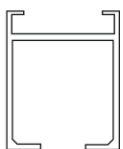
The door weight determines the type of rail used. The X5100 in combination with a soft close is the rail that is most commonly used.



### X5100

Standard rail with 1 soft close.

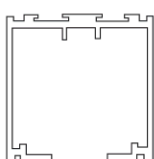
>80 kg MS 75/100  
>120 kg MS 75/100\*\*



### Hawa Porta

Removable track with soft close and soft open.  
Reveal the door leaf with the push-to-open system.

>100 kg MS 75/100



### X5300

Rail with high load capacity for a door leaf up to 300 kg without soft close.

>300 kg MS 100\*\*

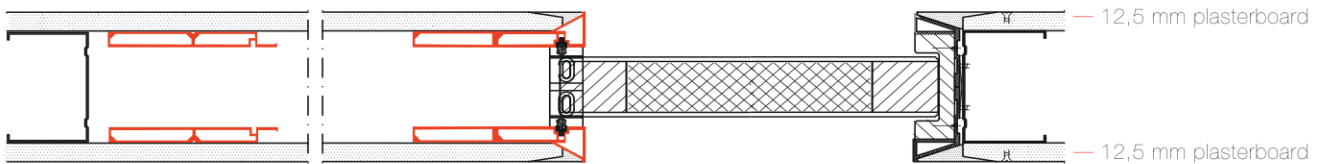
\*\*Without softclose

# WALL FINISH

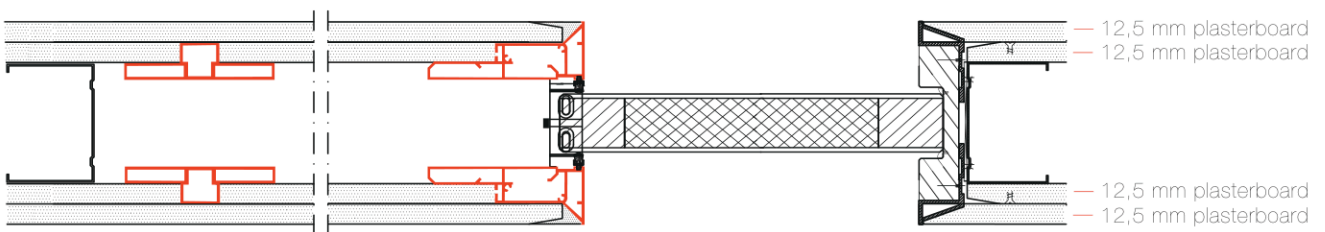
Different types of plating can be used on the pocket systems. Below you can find our range of types and the most common finishes used.

## X5 single plating

Example plating

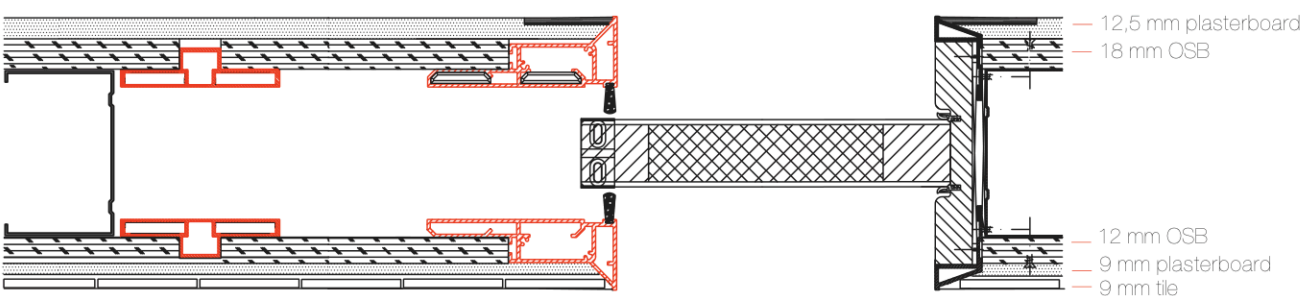
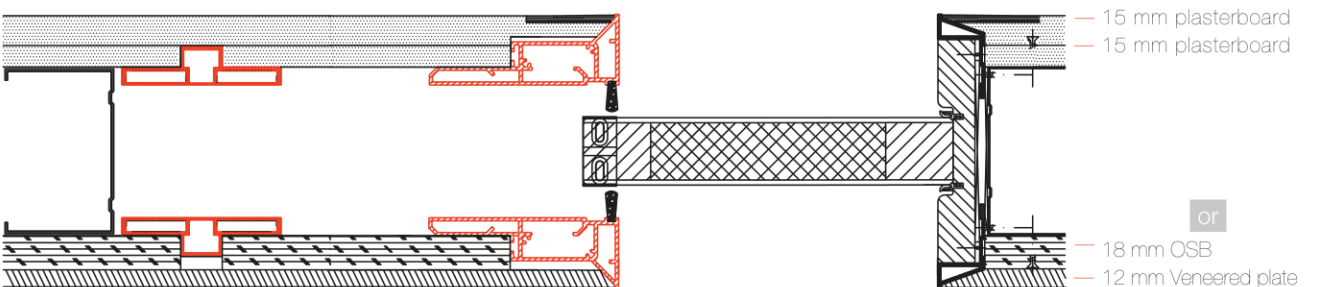


## X5D double plating

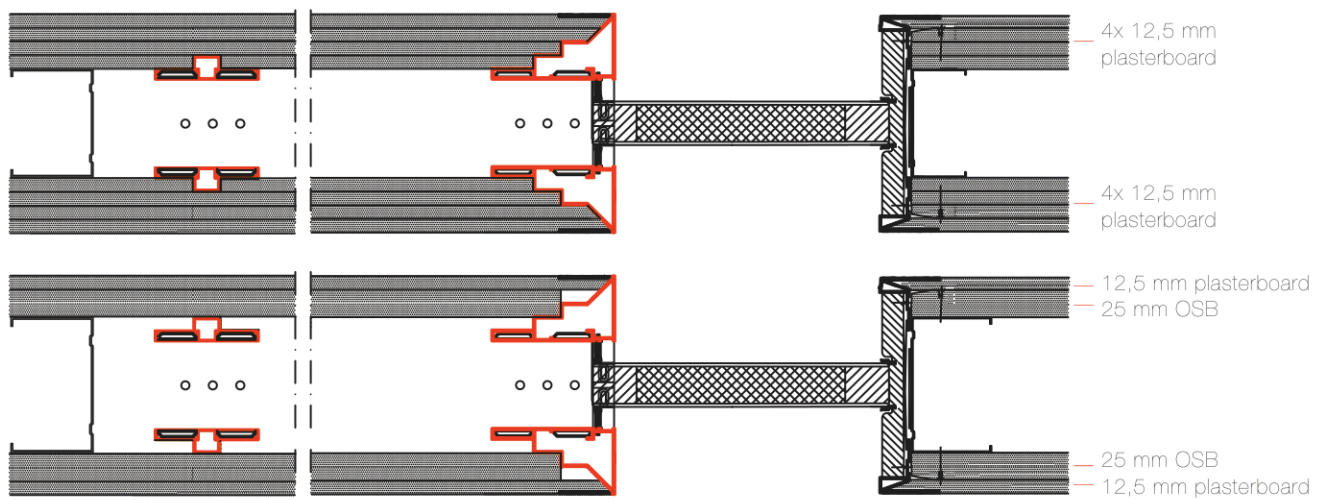


## X5D32 double plating

or



# X5D50







# SPECIAL SOLUTIONS

## SOFT CLOSE + SOFT OPEN



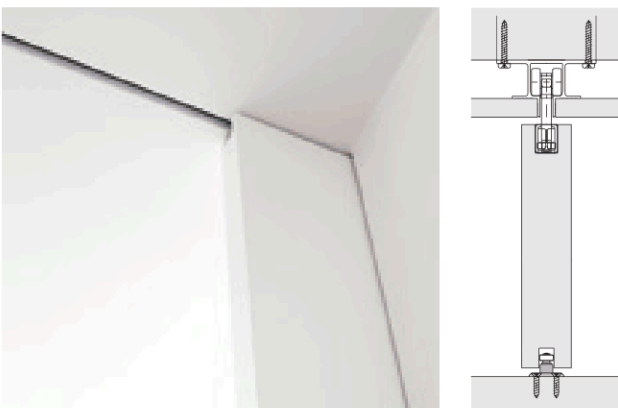
By using two soft close systems you can ensure that your door is decelerated both when opening and closing.

## PUSH TO OPEN



With our X5 pocket sliding door system, your door leaf is fully concealed in the wall. With this push-to-open system, you can reveal the door without any problems by a simple push on the door leaf. This technology is invisibly integrated into the rail.

## EXTENDED SUSPENSION BOLTS



Use our long suspension bolts for a ceiling-high solution without a visible rail.

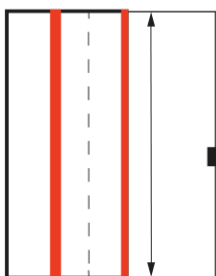


# STOCK

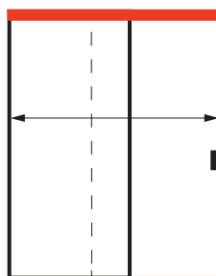
Our standard range are stock items. Our nifty configurator can help you when in doubt.

## 3 BOX SYSTEM

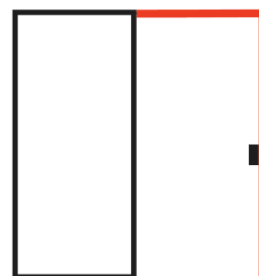
1 UPRIGHTS



2 BEAM + RAIL + HARDWARE



3 FINISH



Notice: This does not include a door leaf or door handle.





○● XA-3102 40 mm



# ACCESSORIES



● XA-3100 max. 60 mm 50 x 48 mm



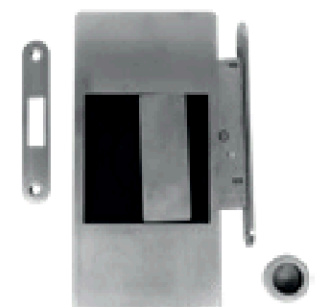
● XA-3300 max. 60 mm 85 x 85 mm



● ● XA-3101 max. 50 mm 50 x 48 m



● ● XA-3301 max. 50 mm 85 x 85 mm



● XA-3105 108 x 90 mm



- XA-3010 10 mm
- XA-3012 12 mm
- XA-3035 35 mm
- ● XA-3040 40 mm
- XA-3050 50 mm
- XA-3060 60 mm



- XA-3310 10 mm
- XA-3335 35 mm
- ● XA-3340 40 mm
- XA-3345 45 mm
- ● XA-3350 50 mm



- ● XA-3772 40 mm
- XA-3777 45 mm
- ● XA-3778 50 mm



- XA-3738 40 mm



- XA-3703 40 mm
- XA-3704 43 mm
- XA-3705 50 mm



● XA-3410

10 mm



A



B

● ● XA-3710

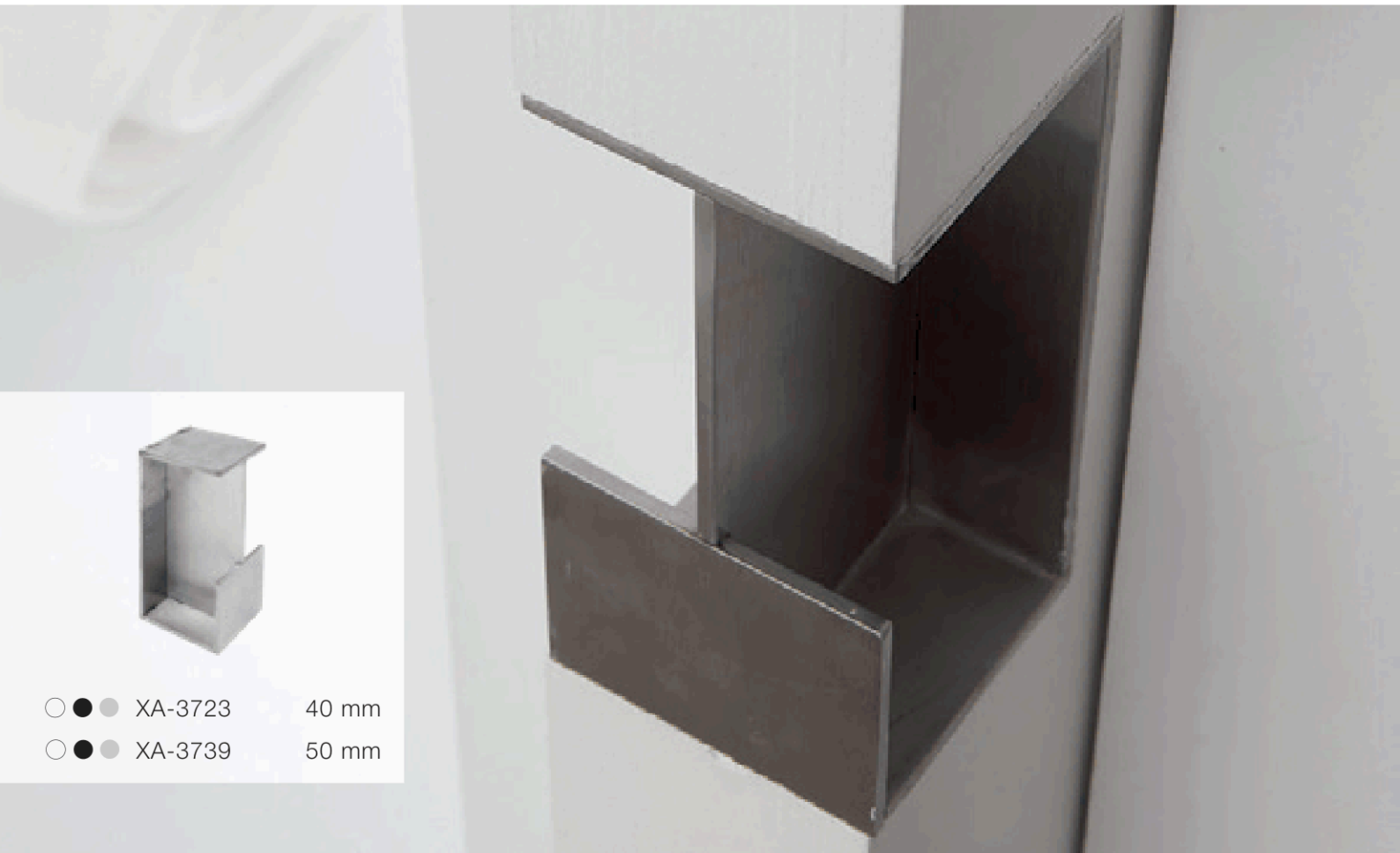
10 mm

A

● ● XA-3711

10 mm

B



○ ● ● XA-3723 40 mm

○ ● ● XA-3739 50 mm



**BAUALU**

[www.BAUALU.com](http://www.BAUALU.com)